

CHOOSE THE
BEST FOR THE
BETTER **RESULT**



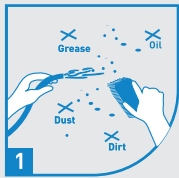
40 Kg Bag | PACKAGING

Highlights

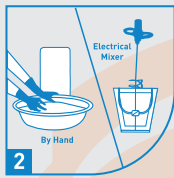
- ✓ Whitest Putty
- ✓ Reduces Paint Consumption
- ✓ Strong Bonding To The Base Plaster
- ✓ White Cement Based Polymer Modified Putty



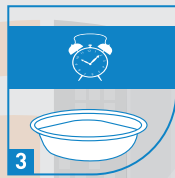
HOW TO APPLY



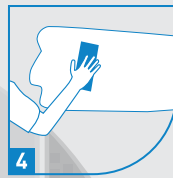
Clean the surface with sand paper / putty blade & then dampen the surface.



Add Putty in water to obtain a lump free paste & mix well. (Recommended mix 40% water)



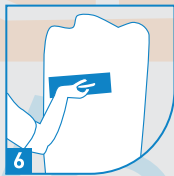
Let it stand for 10 minutes for additives to dissolve & then remix it again for 2 minutes.



Apply 1st coat with putty blade. (Thickness of 0.5-1 mm)



Allow the surface to dry for atleast 3-4 hours.



Pre wet the 1st coat need based and then apply 2nd coat.

KEY FEATURES

- Avoids frequent repainting
- Aesthetic look for ceiling, interior & exterior walls
- True colour tone of the paint is maintained
- Protects expensive paint from dampness & peeling
- Long lasting-smooth finish
- Cost- Effective

TECHNICAL INFORMATION

Sr. No.	Test	Result	Specifications as per HDB, Singapore for Reference
1	Normal Consistency (%)	44.00	-
2	Setting Time (min)		
	Initial Time	179.00	-
	Final Time	307.00	-
3	Compressive Strength (N/mm ²) 28 days	6.20	7 to 12
4	Water Absorption of Coefficient kg/(m ² .H ^{1/2})	35.89	-
5	Tensile Adhesion Strength (N/mm ²) @ 28 Days	0.81	≥ 0.8
6	Water Retentivity %	98.63	>95

Storage

- ▶ Product Should Be Stored In A Dry Place Strictly Away From Moisture.

Shelf Life

- ▶ 12 Months In Unopened Packaging In A Strictly Dry And Cool Storage Place

STORAGE



SITARAM CHEMICALS

Add :- Block No 15. / 116, Ambika Industrial Park ,Kim Mandvi Road,
Ta : Mangrol, Dist :Surat Pin :394110
E-mail :- Sitaramchemicals12@gmail.com